



GREATER MANCHESTER POLICE MUSEUM & ARCHIVES

Access

We strive to be as accessible as possible to all. If you need any additional information please contact us on 0161 856 4500 or email police.museum@gmp.police.uk

Assistance Dogs

Assistance Dogs are welcome throughout the building.

Autism

We want people with autism to feel welcome when they visit us. Please see our downloadable autism friendly guide which has photos of spaces outside and inside the museum along with useful information on the **'Your Visit'** page.

Building access

Access to most of the museum is step free and on the ground floor. Access to the police station is over a cobbled yard. To get to the first floor Court Room there are 22 stone steps. Alternatively there is a customer lift, however this cannot be used in the event of a fire. The museum has a wheelchair available to borrow, should you require it. Please ask in the shop. We have a downloadable map of the building on the **'Your Visit'** page.

Entrance to the Building

On public open days the doors to the front and rear of the building will be open. If you have booked a visit for a Monday, Wednesday, Thursday or Friday you will need to ring the doorbell for access.

Hearing Induction Loop

A portable hearing loop is available. Please ask in the shop if you require it.

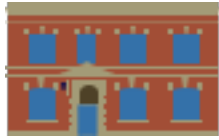
Lift Access

There is one customer lift next to the Crime Room providing level access from the ground floor to the first floor where the court is situated. Please ask a member of staff for assistance with the lift. The lift is big enough for most motorised wheelchairs or double prams. If you are unable to exit the first floor via the stairs in an emergency we regret that our fire regulations do not permit visitors in these circumstances to visit the upper floor.

Parking for Blue Badge Holders

Your Blue Badge usually lets you park for free:

- On streets with parking meters or pay-and-display machines for as long as you need to
- In disabled parking bays on streets for as long as you need to, unless a sign says there is a time limit



GREATER MANCHESTER POLICE MUSEUM & ARCHIVES

- On single or double yellow lines for up to 3 hours unless there's a 'no loading' sign.

On the streets surrounding the museum, there are pay and display bays as well as streets that have single or double lines. There is a small amount of parking for booked groups on Mondays, Wednesdays, Thursdays & Fridays. Please enquire when you make your booking for more details.

Parking for those without a Blue Badge

On the streets surrounding the museum, there are pay and display bays and a number of public car parks. There is a small amount of parking for booked groups on Mondays, Wednesdays, Thursdays & Fridays. Please enquire when you make your booking for more details.

Private tours

The museum can get quite busy and noisy on open days. If the needs of your group are more suited to a quiet visit, we would be happy to arrange a private tour for you. These are available on Mondays, Wednesdays, Thursdays or Fridays. Tours can last between one and two hours depending on your requirements and are free. You and your group will have your own tour guide and the museum to yourselves. To make an enquiry please email police.museum@gmp.police.uk or call 0161 856 4500.

Sign language

Our staff are not trained in BSL, but we welcome groups with interpreters on open days or private tours.

WCs

The museum has three unisex toilets, two on the ground floor and one on the first floor. One of the ground floor toilets is accessible and has baby change facilities. The museum does not have adult changing facilities.

Wheelchair Users

Access to most of the museum is step free and on the ground floor. Access to the police station is over a cobbled yard. There is a customer lift to the Court Room on the first floor, however this cannot be used in the event of a fire. If you are unable to exit via the stairs in an emergency we regret that our fire regulations do not permit visitors in these circumstances to visit the upper floor. There is full access to the ground floor galleries and police station for most types of wheelchair, including motorised wheelchairs.